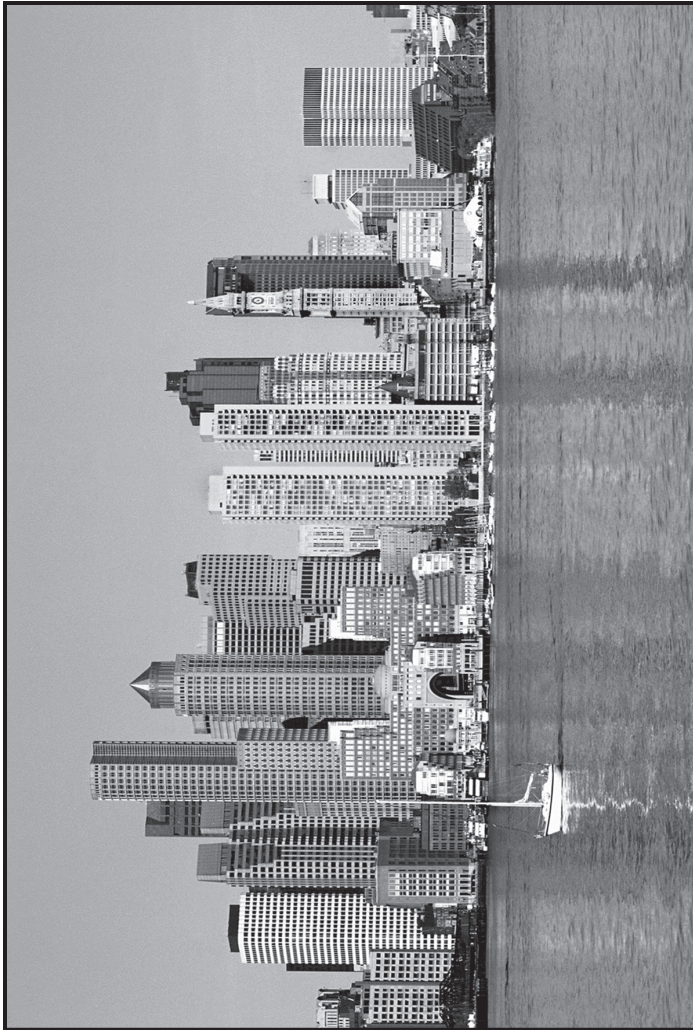




ASPENEWS

1973 - THE BOSTON CHAPTER - 2012

A.S.P.E. - P.O. Box 111, East Walpole, MA 02032 - Vol. 40, Issue 4



Next Meeting

TUESDAY, December 11th, 2012

The Lantana, Randolph, MA

MAIN PROGRAM

*Antimicrobial Benefits
of Copper Systems*

Presented By:

Mr. Dale L. Powell

Copper Development Association Inc.

PROGRAM SCHEDULE

Plumbing 101 / Social Hour	5:00 – 6:00
Dinner	6:00 – 7:00
Chapter Business	7:00 – 7:30
Speaker / Technical Session	7:30 – 8:30

MENU

New England Clam Chowder, Pollo Napolitano
& Boston Cream Pie

MEETING RESERVATIONS

\$30.00 Reservation

\$40.00 W/O Reservation

Retired & Currently Unemployed Members are Free

Please reserve by **Friday, December 7, 2012**

Contact Cathy @ W.P. Haney,

(508) 238 – 2030

WHAT'S IN THIS ISSUE

President's Report	2
Technical Report	3
Membership Report	4
Advertising Information 2012-2013	7
Calendar	Insert
Legislative Report	Insert

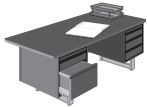
Society email aspe@aspe.org

Society Website www.aspe.org

Boston Chapter Website www.aspebostonchapter.org

**Where Quality and Professionalism
are an every day standard!**

Chapters are not authorized to speak for the Society



President's Report

I am pleased to report that we had a solid turnout for the November Chapter meeting. The Andover, MA location seemed ideal for people living and working in the Interstate 93 corridor. The majority of the attendees were design professionals, and many of them came from design firms in Northern MA and New Hampshire. We also had people travel from Southern MA and Rhode Island.

add a comma

I must admit that we are not sure if there was one factor that drove the attendance. Was it the topic, the location or the novelty of a different location? I do know that we have yet to discover the magic formula but will keep trying. Based on the feedback from a few of those attending I will certainly recommend to the Board various venues to attract members as many as possible.

delete at the meetings

I would like to thank everyone that took the time to come to this meeting. It was very good to see so many new faces at the meetings - certainly I recognized just about everyone. I was also able to meet some new people too.

Please remember that the purpose of the meeting, especially the technical portion is to educate and help develop the design professional's expertise.

to a well (not well a)

The ASPE Convention and Exposition was over shadowed by Hurricane Sandy. Despite the storm hitting the Northeast so hard many people stayed and were treated to well a planned series of events. The Convention started with business sessions in which the delegates voted on various by-law changes. The Convention is also the time to elect Society Officers. I am pleased to announce that the Boston Chapter's very own Bill Hughes, CPD, FASPE was elected to a second term as President. I would like to congratulate and wish Bill all the best. Bill, along with the current Society Board of Directors have done a great job of keeping the organization on a winning track.

CPD,

The Boston Chapter had a great year for the work it has done over the past year. John Callahan, CPD along with Joan Panora received The ASPE 2011-2012 Membership Retention Award. The purpose of this recognition is for Chapters that retain more than 90 percent of their membership. This is the result of both Joan Panora and John Callahan's efforts in keeping members from letting their memberships lapse.

The Boston Chapter received the Award of Merit. This award is bestowed for outstanding performance by a Chapter. Not every Chapter receives this award. There are many things that have to be done to receive this award and it takes the effort of the entire Chapter's Board. I want to recognize all the Boston Chapter BOD members for their hard work and dedication in this all volunteer group.

The Chapter also received the ASPE Research Foundation Award for its ongoing support to the research projects it conducts. The Boston Chapter has made a commitment by donating funds. The most recent project conducted by the Research Foundation is the Roof Drainage Study. The results of this report have been published and we are working on getting a copy posted on the Chapter's Website for all of our members to review.

This past Convention was just my second in four years. Each time that I have gone to a Convention I come back with a renewed sense of satisfaction being a Plumbing Design Professional. I am meeting people from all over the world and Canada that share the same passion. I will tell everyone in the Plumbing Business to try to attend at least one of the ASPE Conventions or Technical Symposiums. It is well worth your time to attend.

The highlight of the Convention is seeing one of your own Chapter members be recognized for their dedication and development in the Plumbing Profession. I had the privilege this year to witness two of Boston's very own receive accolades. The first was when Rick Neth was presented with the ASPE Director's Award for his extraordinary work in establishing the Society's first Student Chapter. The second was when Jim Polando PE, CPD was inducted into the prestigious ASPE College of Fellows. Jim's hard work in promoting the profession of Plumbing Engineering now allows him to join the ranks of a select few individuals. Boston is fortunate to have on its roster 5 men with the title of FASPE. Jim joins Frank Teebagy, PE, Joe Barbera PE FASPE, Bill Hughes, CPD, FASPE, and Joe Vela, CPD, FASPE in the College of ASPE Fellows. Congratulations to Jim Polando PE, CPD FASPE!

In closing, I would like to remind you that the December Chapter meeting will be held with the Greater Boston Chapter of ASHRAE. The meeting location is at the Lantana in Randolph, MA. So please join your fellow Plumbing Design Professional for a great night out.

Sincerely, Rich Dean, CPD, President, Boston Chapter ASPE

President
Rich Dean, CPD
R. G. Vanderweil
Tel: (617) - 956 - 4743
Fax: (617) - 423 - 7401
e-mail: RDean@Vanderweil.com

V. P. Technical
Kevin Lally, CPD
Tel: (603) - 505 - 4503
Fax: (603) - -
e-mail: kwl@eldaar-craftdesign.com

V. P. Legislative
Manuel B. Garcia, PE, CPD
Tel: (508) - 728 - 5652
Fax: (774) - 202 - 7677
e-mail: mgarcia43@comcast.net

Administrative Secretary
John Johnston, CPD
Group, Inc
Tel: (617) - 682 - 4758
Fax: (617) - 577 - 9191
e-mail: ljohnston@syska.com

V. P. Membership
John Callahan
J. H. Pokorny Associates
Tel: (781) - 762 - 2661
Fax: (781) - 762 - 5949
e-mail: johnc@jhpokorny.net

Treasurer
Richard Pokorny
J. H. Pokorny Associates
Tel: (781) - 762 - 2661
Fax: (781) - 762 - 5949
e-mail: richp@jhpokorny.net

Administrative Secretary
Paul Galvin
GF Piping Systems
Tel: (741) - 788 - 7042
Fax: (508) - 362 - 3544
e-mail: paul.galvin@georgfischer.com

Corresponding Secretary
Patrick J. Haney
W. P. Haney Company
Tel: (508) - 238 - 2030
Fax: (508) - 238 - 8353
e-mail: phaney656@aol.com

ASPENEWS Editor
Dawn Pokorny
Tel: (508) - 520 - 0133
Fax: (781) - 762 - 5949
e-mail: dawnp@jhpokorny.net

Education Chairman
Fredrick (Rick) Neth, CPD
Parsons Brinkerhoff
Tel: (617) - 426 - 7330 X4809
Email: nethf@pbworld.com

Affiliate Liaison
Jeff Gooding
David Gooding
Tel: (401) - 639 - 4429
Fax: (508) - 894 - 2001
email: jgooding@goodingd.com

Board of Governors
Chairman - Al Marzullo PE, CPD
Members
Joseph A. Vela, Sr., CPD
William F. Hughes, CPD



Technical Report

December ASPE Boston Chapter Meeting Annual Joint Meeting with ASHRAE Anti Microbial Benefits of Copper Systems

You are cordially invited to join us for our December Meeting on **Tuesday, December 11, 2012**. This month's meeting is our annual joint meeting with the American Society of Heating, Refrigeration and Air Conditioning Engineers, better known as ASHRAE. The meeting will go back to Lantana's in Randolph, MA. This meeting has proven to be a great opportunity to come out and meet with our fellow HVAC Engineers and Industry professionals. Please make your reservation early as this meeting is traditionally well attended.

For years, the connecting piping to HVAC equipment, 2" diameter and smaller, was predominantly copper tube and used extensively nationwide for hydronic applications. Now, more than ever, copper may see an increase in its use in many mechanical systems; especially those in hospitals, schools, laboratories and other areas where microbial contamination on air conditioning equipment, heating coils and plumbing components can cause unpleasant odors, reduce system efficiency, and jeopardize the health of occupants.

Copper, the red metal, has recently received Treated Article Exemption for HVAC applications by the United States Environmental Protection Agency (EPA) for use in HVAC systems as an antimicrobial surface material. Testing has proven that the use of copper finned coils suppresses the growth of bacteria, mold and mildew on the surfaces of the coils and thus reduces the development of odors (that mildew smell) often associated with air handling equipment.

Our speaker will be Dale L. Powell, a Project Manager and Piping Applications Specialist for Copper Development Association Inc. (CDA). CDA is a not-for-profit trade association that serves as the advanced market development and engineering services arm of the copper and brass industry in the United States. As such, CDA provides engineering assistance, technical development and installation training to the designers, specifiers, installers and consumers of copper and copper alloy tube and fittings. Since 1995, Mr. Powell has managed the commercial and plumbing tube and fittings markets in the 13 Northeastern states and the District of Columbia for CDA. He has over 20 years experience in the plumbing and HVAC industry as an Estimator, Project Coordinator, Designer and Installer prior to coming to CDA. Dale is a Master Plumber, Certified Instructor of Apprentices and Journeymen with 16 years experience as an Instructor and is professionally affiliated with ICC, NFPA, NACE, AWS, ASPE, ASSE and numerous other professional organizations.

By Kevin W. Lally CPD, V.P. Technical, Boston Chapter ASPE

K Ross Co.
Manufacturers Agent

WWW.KROSSCO.COM
SALES@KROSSCO.COM
(781) 422.2273

AQUARIUS BATHWARE
COMFORT designs
INTERSAN

ISIMET
Rockford Separators
ADVANCE TABCO

FROET
Hydrotek
Filtrine

SLOAN.
SLOAN VALVE COMPANY

Represented to ASPE by:

J.H. Pokorny Associates
phone: 781-762-2661

web: www.jhpokorny.net • e-mail: info@jhpokorny.net

WATTS®
REGULATOR

WATTS
DRAINAGE

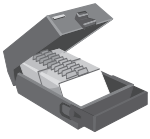
AMES
FIRE & WATERWORKS

Patrick J. Haney

Represented by:
WP Haney Co.
51 Norfolk Ave.
South Easton, MA 02375
Phone (508) 238-2030
Fax (508) 238-8353
Cell (508) 326-7056

GOURLEYCO
HOT WATER BY DESIGN
80 FELTON STREET, WALTHAM, MA 02453
Phone: 781-894-9500 Fax: 781-894-2301
Website: www.gourleyco.com

Raypak Gas Water Heating Boilers Hydronic Heating Boilers Gas Fired Booster Heaters Commercial Pool and Spa Heaters	Rheem Tank-type Water Heaters Gas and Electric Residential and Commercial	RUUD
RECO USA Semi-Instantaneous & Factory Packaged Water Heaters	SPIDERfire 95% thermally efficient water heater	



Membership News

2012 ASPE Convention & Exposition

I had the honor of representing the Boston Chapter as a Delegate at the 2012 ASPE Convention and Exposition held in Charlotte, NC the last week of October. Unfortunately, due to the arrival of Hurricane Sandy I had to cut my trip short. Doing so meant I would miss the two days of technical seminars that I had planned on attending, and I wasn't able to attend the two day Exposition. I always look forward to walking the exhibition floor and see all the latest plumbing products and meet with my favorite manufacturers. It is time well spent and I encourage you to consider attending the 2014 show in Chicago.

CPD Recertification Deadline

Missing the ASPE technical seminars means I didn't earn all the extra CEUs I had intended on getting. For those of you that have your CPD, it needs to be renewed every two years. As luck would have it, mine is up for renewal on March 31st, 2013. For those of you that also have to re-certify before 3/31/13 here is a brief summary reminder for you:

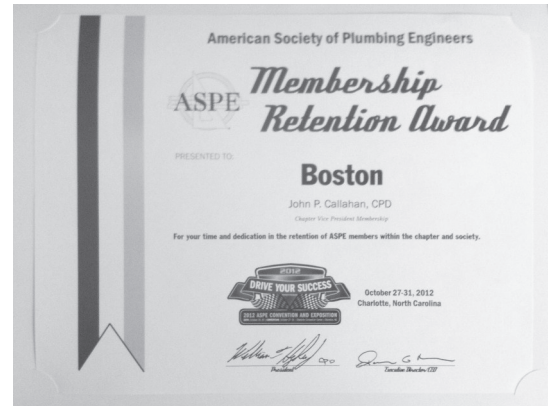
A total of 2.4 Continuing Education Units (CEUs) are required for CPD recertification. A non-refundable recertification fee of \$50 must accompany the CPD Recertification Application if you are member of ASPE; if you are a non member the fee is \$135.

In the event you are randomly audited, you will be required to substantiate the suitability of a course, seminar, workshop, or in-house training session by providing acceptable documentation that should be available upon request (e.g. letters, certificates, etc.). Also, if you renew after your expiration date of March 31, 2013, you may be penalized with a \$125 reinstatement fee and will automatically have to go through the audit process.

For complete instructions and the application you can download it at the ASPE website at www.aspe.org.

Membership Retention

One personal highlight for me at the Convention was to be presented the Boston Chapter's Membership Retention Award. As VP Membership, you know I harp on getting our members to renew their annual memberships in a timely fashion. To that end, I have been very fortunate to have Joan Panora volunteer her time to assist in that effort. Each month Joan calls our members that are due to renew their membership and she politely reminds them that their renewal date is approaching. This Membership Retention award was earned by Joan, pure and simple, so I want to publicly give her my thanks for all she has done for the membership cause over the years. I have attached a photo of the Membership Retention Award for all to see. Thanks Joan.



By John Callahan, CPD, V.P. Memb., Boston Chapter ASPE

The Californians are coming!

California's lead-free legislation is spreading across the country, and T&S has already made all of our products lead-free across the line. And as always, T&S products are rugged, reliable, and available via 24-hour quick ship.



contributing to LEED certification

RELIABILITY BUILT IN™
www.tsbrass.com • 800.476.4103

Represented in Boston by Specification Sales - 781-396-0842



EMERSON SWAN

On-Demand

AO Smith



HyTronic

CHICAGO FAUCETS



Bumble Bee

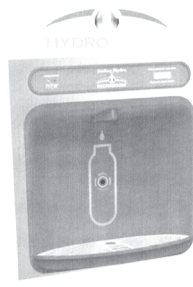
Taco



300 POND ST. RANDOLPH, MA 02368
www.emersonswan.com | (800) 346 - 9215

Bottle Filling Station

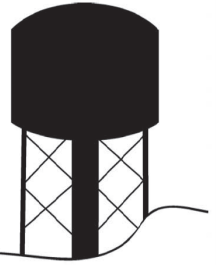
- **Visual Filter Monitor**
Green, yellow, red LED lights indicate when filter needs maintenance
- **Water Dispenser**
Quick fill rate - 1.1-1.5 gpm
Laminar flow provides a clean fill with minimal splash
- **Green Counter™**
Informs user of number of 16oz. bottles saved from landfills



halseytaylor.com 630.574.3500

603-644-5554
Fax: 644-3338
800-542-5554

sales@towerhillsales.com
www.towerhillsales.com



P.O. Box 457
320 Rockingham Road, Unit 4
Auburn, New Hampshire 03032

Tower Hill
Sales Associates, Inc.

ELKAY

EZH₂O™

www.elkayusa.com



Davenport Associates
A Northeast Marketing & Sales Team
for Plumbing Manufacturers
Phone: (203) 265-2389
www.davenportassociates.com



Bradley



Commercial Washroom Innovation

www.bradleycorp.com



Davenport Associates
A Northeast Marketing & Sales Team
for Plumbing Manufacturers

75 Parker Street
Wallingford, CT 06492
Phone: (203) 265-2389
Fax: (203) 269-5941
www.davenportassociates.com

Hot Water Delivery Delay

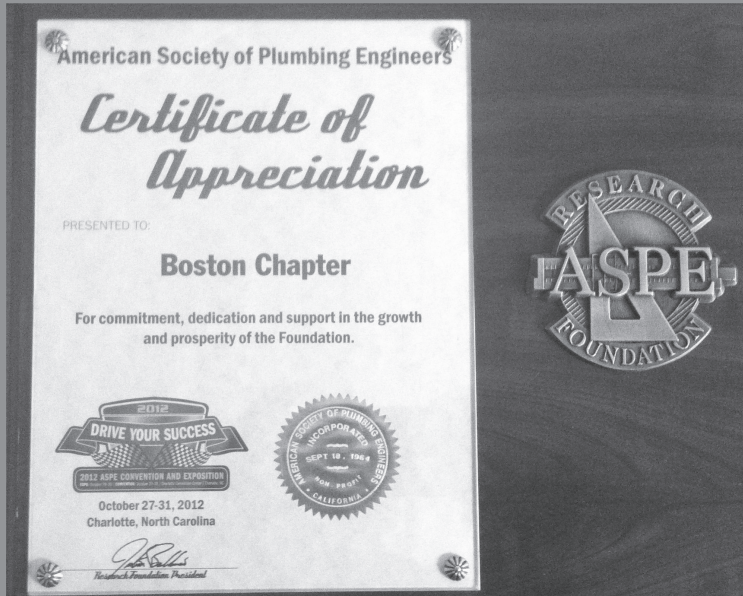
A common complaint we all hear on a regular basis is in regards to how long it takes to run a 0.5 gpm faucet before hot water is available. In the interest of helping some of our younger members understand how their piping design effects this issue, the following reference table is provided to quantify the actual delay time based on pipe size.

Intuitively, we know the farther a faucet is located from a recirculated hot water supply line, the greater the volume of water in the supply line to the faucet. The same holds true for pipe diameter. The larger the diameter of the supply pipe, the greater the volume of water contained in each foot of piping. After extended periods of non-use of a faucet, the water sitting in the faucet hot water supply piping loses temperature. The length and diameter of your faucet supply piping will dictate how long it will take to get hot water from the hot water main to the faucet.

As the reference table shows, for every foot of 1/2" piping between a recirculated hot water main and the faucet, you can expect a 0.7 second delay in getting hot water. For example, if the faucet is supplied through 25 feet of 1/2" hot water supply piping, it can take up to 30 seconds to get hot water to the faucet. If you are feeding multiple faucets, and you have designed a 3/4" supply, that delay more than doubles to 70 seconds. That's a long time to wait for hot water every time the faucet has gone unused for an extended period of time. In today's projects where you are trying to minimize water consumption, it makes sense to keep your hot water supply drops to a minimum length and diameter. It will save both water and time.

Pipe Size (Diameter)	Pipe Capacity (Gal. per ft.)	Time per ft. (@ 0.5 gpm)
3/8"	0.006	0.7 sec
1/2"	0.010	1.2 sec
3/4"	0.023	2.8 sec
1"	0.041	4.9 sec
1 1/4"	0.064	7.7 sec
1 1/2"	0.092	11 sec
2"	0.163	20 sec
3"	0.367	45 sec
4"	0.653	1.3 min.
6"	1.469	3 min.
8"	2.611	5.2 min.
10"	4.018	8 min.

Congratulations ASPE Boston Chapter!



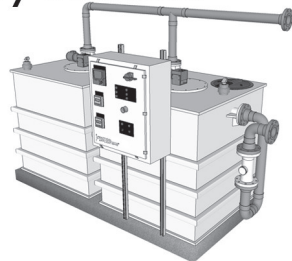
The Boston Chapter was presented a Certificate of Appreciation plaque by the ASPE Research Foundation at the 2012 ASPE Convention in Charlotte, NC. The plaque was given in recognition of the Boston Chapter's continued "Commitment, dedication and support in the growth and prosperity of the foundation."

Boston Chapter President Richard Dean accepts the Chapter Award of Merit from Society President William Hughes at the 2012 ASPE Convention and Exposition held in Charlotte, NC.

pH Neutralization Greywater • Bio Decontamination Amalgam / Mercury Treatment

↑ PRACTICAL APPLICATIONS →

www.paiH2O.com
617-423-5639



Leonard Valve Company
1360 Elmwood Avenue
Cranston, RI 02910
Ph (800) 222-1208
Fax (401) 941-5310
www.leonardvalve.com



J.H. Pokorny Associates

JH Pokorny Associates
1502 Providence Hwy
Norwood, MA 02062
Ph (781) 762-2661
Fax (781) 762-5949
www.jhpokorny.net



Leonard... "The Right Mix" for your tempering needs....including lead free mixing valves.

The Walter F.



77 Green St. Foxboro, Ma
Ph: 1-800-888-1922
Fax: 1-800-888-1942

IPEX KITZ  NTI WATCO

LUXPRO FLOODMASTER EEMAX

WOODFORD  JOHN GUEST

Piping. Systems. Solutions.



Northeast Engineering Specialist
David Dears • 617-824-0601

www.victaulic.com
1-800-PICK-VIC

Joe Myers
 Regional Manager
 603-223-0107 – Direct
 603-223-0108 – Direct Fax
 603-496-9031 – Cell Phone
 jmyers@milwaukeevalve.com



Milwaukee Valve Company
 16550 West Stratton Drive
 New Berlin, WI 53151
 262-432-2800 – Phone
 262-432-2701 – Fax
 www.milwaukeevalve.com

The Fire Pump Testing Company

Evaluation, Testing and Certification of Fire Suppression Systems
 Fire Pump Testing, Standpipe Testing and Building Commissioning
 Hydrant Flow Testing and Water Supply Analysis
 Residential and Commercial System Installation and Service
 Fire Protection Design and Engineering - System Hydraulic Analysis

Tel: (617) 971-0700
 Fax: (617) 524-7171
 Cell: (617) 592-4236

11 Varney Street
 Boston, MA 02130-4109
 Thomas Duross CPD
 http://www.thefirepumptestingcompany.com
 Email: tom@thefirepumptestingcompany.com
 Member: ASPE, NFPA, AFSA, FCCCHR, BBB

The Spencer Turbine Company

Manufacturer's of:

- UL-Listed Hermetic Natural Gas Boosters
- Central Vacuum Systems for Housekeeping
- Oral and Surgical Laser Smoke Evacuation

Represented By: **Environmental Air Specialties**
 P.O. Box 541, Grafton, MA 01519
 T: 508.839.6157 F: 508.839.4431
 W: www.easne.com



Maurice Brodeur - Sales/Engineering
 C: 508.958.6346 E: mbrodeur@easne.com

Standard UL-Listed & Custom Natural Gas Boosters & GasCube® Skid Packages Featuring:

- Standard Boost Pressures to 83" WC/ Volumes to 240,000 CFH (Higher Available)
- Simplex & Duplex Designs
- Pre-Engineered, Pre-Piped, Factory Tested
- Smallest Footprint in the Industry
- Innovative Design Cools Motor & Extends its Life



Spencer
www.spencerturbine.com

KIRSCHNER ASSOCIATES, INC.

8 Abbey Lane, PO Box 312
 Middleboro, MA 02346-0312
 Tel: 800-752-1588 Fax: 508-947-0850
www.kirschnerassociates.com

PATTERSON-KELLEY
AMERIDEX PHX • WENDLAND TANK
RITE BOILERS • NATCO HEATERS
SECURITY CHIMNEYS



Guardian

EMERGENCY EYEWASH & SHOWER TECHNOLOGY

J.H. Pokorny Associates 1502 Providence Highway
 Norwood, MA 02062
 781 762 2661 TELEPHONE
 781 762 5949 FACSIMILE

Guardian Equipment 1140 N North Branch St
 Chicago, IL 60642
 312 447 8100 TELEPHONE
 312 447 8101 FACSIMILE

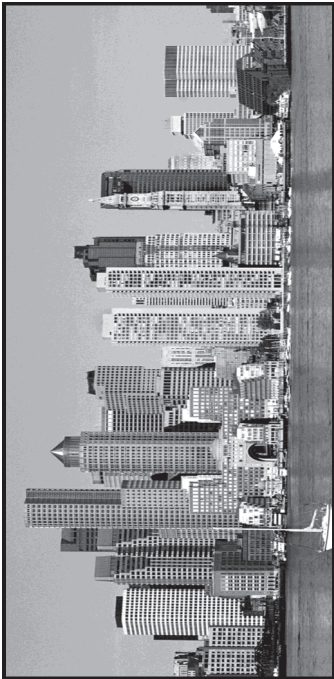
Index of Paid Advertisers

Air Energy	8	Gourley	3	Sloan Valve Company	3
Bradley	5	Guardian Equipment	7	T & S Brass	4
Elkay	3	Halsey Taylor	5	Tower Hill Sales	5
Emerson Swan	4	J. H. Pokorny Associates	8	Victaulic	6
Environmental Air Specialties	7	K Ross Co.	3	Walter F. Morris Company	6
Environmental Air Specialties	7	Kirschner Associates, Inc.	7	W.P. Haney / Watts	5
ETTER Engineering	8	Leonard Valve	6		
ETTER Engineering	8	Milwaukee Valve	7		
Fire Pump Testing Company	7	Practical Applications	6		



From:

**A.S.P.E.
P.O. Box 111
East Walpole, MA 02032**



Boston Chapter - AMERICAN SOCIETY OF PLUMBING ENGINEERS

**Next
Event**



**Tuesday
11th
December**

Send to:

FIRST CLASS MAIL



Robert N. Littman
Vice President

6 Norfolk Avenue, South Easton, MA 02375
© (508) 230-9445 Fax (508) 230-9446
Cell (617) 921-1017 rlittman@airenergy.com



- Air Compressors
- Vacuum Pumps & Systems
- Air Treatment Products
- Sales/Service/Rentals
- Dryers • Filters
- 24-Hour Service

Web: www.airenergy.com

<p>J. H. Pokorny Associates LLC</p> <p>www.jhpokorny.net getinfo@jhpokorny.net</p> <p>1502 Providence Highway Norwood, MA 02062 Tel (781) 762 - 2661 Fax (781) 762 - 5949</p>	<p>Proud to Represent:</p> <p>Sloan Valve Co. Halsey Taylor Co. Leonard Valve Co. WaterSaver Guardian Georg Fischer Just Acorn Elmdor Chronomite</p>
--	--

ETTER Engineering Company, Inc.

SOLUTIONS...
To ALL Your Process Heating & Combustion Needs!

Custom Manufacturing Solutions

- Complete regulator station design and build
- Custom process heating packages and applications
- Engineering specialty valve packages and valve trains
- Energy and metering services, including in-plant sub-metering, complete station design and build, and data acquisition
- UL-508A Certified Panel Shop specializing in combustion controls and flame safeguard systems.

www.etterengineering.com

Tel: 860-584-8842
Fax: 860-584-8612
Cell: 203-213-6971

SOLUTIONS...To ALL Your Process Heating & Combustion Needs!

ETTER Engineering Company, Inc.

Jon G. Moore
V.P., Engineering Sales

210 Century Drive
Bristol, CT 06010

jmoore@etterengineering.com
www.etterengineering.com