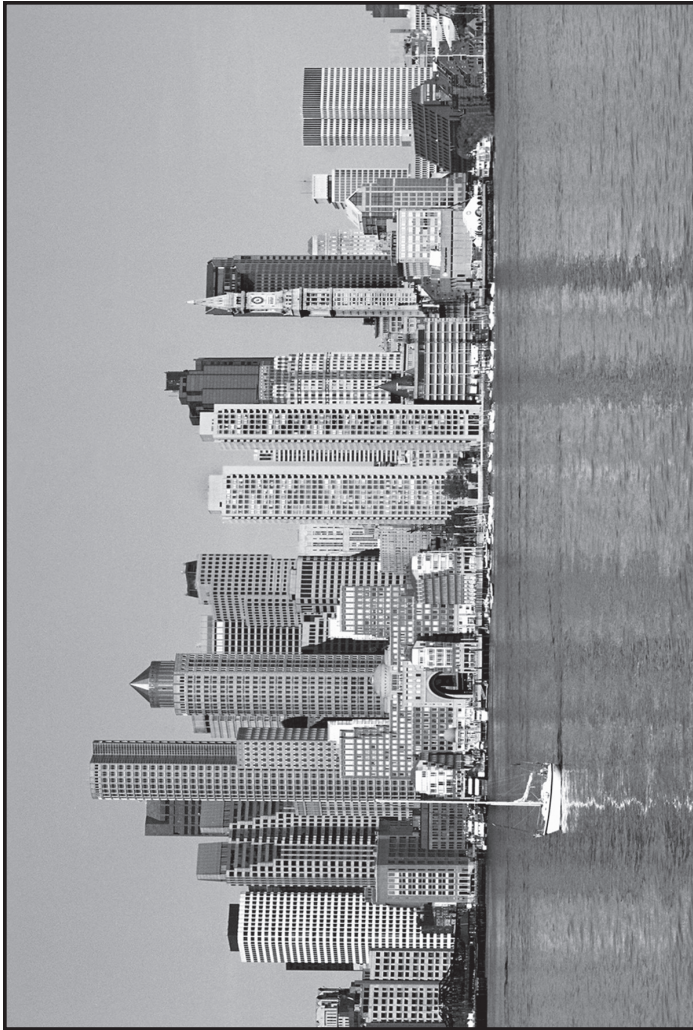




# ASPENEWS

1973 - THE BOSTON CHAPTER - 2011  
A.S.P.E. - P.O. Box 111, East Walpole, MA 02032 - Vol. 39, Issue 2



## Next Meeting

**Tuesday, October 11, 2011**

*The Lantana, Randolph, MA*

### MAIN PROGRAM

**“NFPA 3 Commissioning”**

**Presented By:**

**Mr. Matt Klaus**

*From NFPA*

### PROGRAM SCHEDULE

Plumbing 101 / Social Hour	5:00 – 6:00
Dinner	6:00 – 7:00
Chapter Business	6:45 – 7:00
Speaker / Technical Session	7:00 – 8:30

### MENU

Iceberg Wedge, Cape Cod Stuffed Chicken Breast & Carrot Cake

### MEETING RESERVATIONS

**\$30.00 Reservation**

**\$40.00 W/O Reservation**

**Retired & Currently Unemployed Members are Free**

Please reserve by **Friday, October 7, 2011**

Contact Cathy @ W.P. Haney,  
(508) 238 – 2030

## WHAT'S IN THIS ISSUE

Boston Chapter Product Show Information	2
President's Report	3
Membership Report	3
Plumbing 101	4
Golf Outing 2011	7
Advertising Information	7
Calendar	Insert

Society email [aspehq@aol.com](mailto:aspehq@aol.com)

Society Website [www.aspe.com](http://www.aspe.com)

Boston Chapter Website [www.aspebostonchapter.org](http://www.aspebostonchapter.org)

**Where Quality and Professionalism  
are an every day standard!**

**Chapters are not authorized to speak for the Society**

# Boston Chapter ASPE Product Show

As we write, your Boston Chapter 20<sup>th</sup> Anniversary Show is shaping up to be one of the best. All of the people involved to date have been working hard to ensure this show is successful for everyone. We had another very productive meeting at Pokorny Associates this past month and thank you Rich for your hospitality. Please feel free to email Nancy Bonnetti for any of our past Meeting Minutes. We hope that word is getting out for everyone to please sign up early to attend the show and seminars. The web site and the electronic broadcast emails are up to date and waiting for your review and use. Please take a minute now to go to [www.aspebostonchapter.org](http://www.aspebostonchapter.org) to review all the special show notations, Affiliate Spotlights and most important the link to electronically sign up. If you have any issues, please call Susan Killelea at 508-894-2000 and press 2 when prompted we can sign you up over the phone.

We are pleased to announce that Booth Sales have been ahead of schedule this year and that we are nearly sold out. These long standing Affiliates have done their part. Now it is time for the Engineers and Plumbing Professionals to take a minute and do their part by signing up and committing time to attend the seminars and show. This show has been dedicated to the Affiliates that have helped make our Boston Chapter one of the strongest in Society.

We have discussed the Booth Attendance Signature Cards that have been created new this year. These cards will document your show floor time for additional CEU's as well as document booth signatures to help qualify for special prizes. We have discussed the many cash prizes available to the Engineering Attendees with many opportunities to win throughout the entire show. Our past President Bill Brady will "MC" the show and help entertain us through the raffle drawings and announcements during the show. We have offered Seminar Topics and excellent Speakers for those that want to keep pace with the latest technical topics and obtain CEU credits. We have created Attendee welcome books with all Affiliate Line Cards and other Anniversary text for future reference and will provide special gifts just for attending. We have coordinated with Lantana to provide you with some excellent food and refreshments while you walk through the show floor. We have asked the Affiliates to show their latest cutting edge products for the new designers and experienced Engineers. We encouraged each Affiliate to bring old photos and other historic items for display to help celebrate your Boston Chapters almost 40 years of excellence. Some of you may find yourself in the Lobby of Lantana waiting to be checked in on the night of the show. We will have old photos on display for review, all the raffle prizes, we will have our very own Bill Hughes, ASPE Society President, our new Society Executive Director, Jim Kendzel, Region and Society Guests, Members from other Chapters outside MA and all of our Past Chapter Presidents. As you walk the show floor we hope that you take the time to meet these guests and thank them for attending our celebration. We have reached out to our MA Plumbing Board Members and several other local guests to offer you opportunities to shake hands and network.

These and many other more subtle things are being provided to help assure you we have listened to many of the past comments and hope you will take the time to sign up now.

We will be wrapping up our Product Show Meetings this month at Emerson Swan on October 3 at 5:30 pm. We welcome anyone to join us to listen in and offer suggestions as we run through our final heart attack list of "To-Do" items.

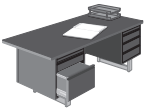
## We continue this month with our ASPE Boston Chapter Affiliate Spotlights!!



*"The Morris Company is a well respected sales agency that has a proven track record of successes and achievements in the plumbing, heating and HVAC markets of New England. The Company has successfully managed long term relationships with the wholesale channel, the specifying engineers, architects, and the manufacturers that we represent. The Walter F. Morris Company began in 1922, and has continuously operated and grown in the New England market. It is the mission of the company to provide the plumbing, heating, and HVAC trades in New England with the highest quality products and service in our market. We do this by having on our staff individuals of outstanding quality*

*who understand our mission and bring the highest integrity and work ethic to their respective functions on a daily basis. The Morris Company operates out of a modern 40,000 sq. ft. facility that is conveniently located in Foxborough, MA. at the intersection of Routes I-95 and I-495. The Company was purchased from the Southern Union Gas Company in 2001, by long time Sales Manager, Joe McCarthy. The Company has in place the next generation of company ownership, and will continue to provide the quality products and service that the New England market has come to expect. The Morris Company has membership in ASPE, NEFI, respective state PHCC's in New England, AIM/R, MANA."*

*(Continued on page 8)*



## President's Report

I was able to report in last month's newsletter that we are pushing an active agenda for the upcoming chapter cycle of 2011-2012. The 3 major chapter events are the **Plumbing 101 Lecture Series**, the **Annual Golf Tournament**, and the **Biennial Product Show & Seminars**.

ASPE Society is also hosting the **Technical Symposium in Orlando FL**. Registration is still open and we encourage you to attend. If you are planning on attending please let me know. There will be a few other Boston chapter members in attendance and I would like to keep in touch while at the symposium.

The objective of these events is to align with ASPE's mission of promoting education and fostering relationships between its members and other industry professionals. Please see below for updates on these programs.

### Annual Chapter Golf Tournament

The golf tournament was scheduled to be held on September 23<sup>rd</sup>. Some have questioned why we had moved it from the summer months to September. I can say that the board solicited input from various members and affiliates (which are some of the tournaments biggest sponsors). We also considered that July and August are big vacation months. The turnout in the past tournaments was averaging 85 golfers and declining. We debated and ultimately decided to move it to September in hopes of increasing attendance. Golf is a popular sport especially amongst our community and so are tournaments. We did look at other standing tournaments to avoid conflicts. At the time of this report there was 92 registered golfers and 18 hole sponsors.

### Plumbing 101 Lecture Series

The Plumbing 101 Lecture Series got off to a good start. Most of the attendees gave us positive and constructive feedback. There is much more information we would like to share with our members. The primary objective of the seminar is to provide an additional educational opportunity to our younger members. The target audience of the seminars is for the person who is starting a career in the plumbing industry or the slightly more experienced person who needs to develop their existing skills. Please look to Manny Garcia's article in this month's newsletter for more information regarding the class itself.

I would like to address the Lecture Series Attendees, Department Heads, and Principals of the many engineering firms throughout the area; these lectures are intended to be an additional resource for you and your firms. The industry has changed and there is a realization that training on the job suffers the most. We are offering these lectures for your benefit. Let us know if you are interested and what topics you would like to see presented. Department Head and Principals please consider allowing your people to attend these once a month lectures.

### Biennial Product Show & Education Seminars

The Biennial Product Show is shaping up to be one of our best in years. This will be held on **Tuesday November 8<sup>th</sup>**, 2011 at the Lantana in Randolph, MA. This is a milestone for our chapter as it marks our 20<sup>th</sup> Anniversary Biennial Product show. I must reiterate that the key to a successful show is the attendance. The invitees are engineers, contractors, AHJ's, architects and facilities persons. The benefits are intended to be educational for all. As members of ASPE this one benefit that is also FREE! Please make an effort to attend but also talk to your colleagues and clients; you can invite them to attend.

(Continued on page 6)



## Membership News

### New Members

The Boston Chapter would like to welcome its three newest members;

Ronald J. Calo	Affiliate Member	MarCor Purification	Lowell, MA
Frank C. Kolbaba	Full Member	Yeaton Associates	Littleton, NH
Keith A. Cannizzaro	Associate Member	CSI Engineering	Saugus, MA

### Updated Newsletter Mailing List

As I had reported a number of months ago during our membership drive, any ex-members from the chapter that decided to not renew their membership would be purged from the monthly newsletter mailing list. Although we want to stay in contact with everyone in our industry, we can't afford to subsidize the newsletter costs to non-members. There were over a hundred past

(Continued on page 8)

### President

Rich Dean, CPD  
R. G. Vanderweil  
Tel: (617) - 956 - 4743  
Fax: (617) - 423 - 7401  
e-mail: RDean@Vanderweil.com

### V. P. Technical

Kevin Lally, CPD  
Tel: (603) - 505 - 4503  
Fax: (603) - -  
e-mail: kwl@eldaar-craftdesign.com

### V. P. Legislative

Manuel B. Garcia, PE, CPD  
Tel: (508) - 728 - 5652  
Fax: (774) - 202 - 7677  
e-mail: mgarcia43@comcast.net

### Deputy V.P Legislative

Laurence D. Johnston, CPD  
Syska Hennessy Group, Inc  
Tel: (617) - 682 - 4758  
Fax: (617) - 577 - 9191  
e-mail: ljohnston@syska.com

### V. P. Membership

John Callahan  
J. H. Pokorny Associates  
Tel: (781) - 762 - 2661  
Fax: (781) - 762 - 5949  
e-mail: johnc@jhpokorny.net

### Treasurer

Richard Pokorny  
J. H. Pokorny Associates  
Tel: (781) - 762 - 2661  
Fax: (781) - 762 - 5949  
e-mail: richp@jhpokorny.net

### Administrative Secretary

Paul Galvin  
GF Piping Systems  
Tel: (741) - 788 - 7042  
Fax: (508) - 362 - 3544  
e-mail: paul.galvin@georgfischer.com

### Corresponding Secretary

Patrick J. Haney  
W. P. Haney Company  
Tel: (508) - 238 - 2030  
Fax: (508) - 238 - 8353  
e-mail: phaney656@aol.com

### ASPENEWS Editor

Dawn Pokorny  
Tel: (508) - 520 - 0133  
Fax: (781) - 762 - 5949  
e-mail: dawnp@jhpokorny.net

### Education Chairman

Fredrick (Rick) Neth, CPD  
Parsons Brinkerhoff  
Tel: (617) - 426 - 7330 X4809  
Email: nethf@pbworld.com

### Affiliate Liaison

Jeff Gooding  
David Gooding  
Tel: (401) - 639 - 4429  
Fax: (508) - 894 - 2001  
email: jgooding@goodingd.com

### Board of Governors

Chairman - Al Marzullo PE, CPD

### Members

Joseph A. Vela, Sr., CPD  
William F. Hughes, CPD



## Plumbing 101

At our September Dinner Meeting, I had the pleasure to assist our new Education Chairman and immediate Past President Rick Neth as we kicked off our new Plumbing 101 lecture series. This is an initiative that we, the ASPE Boston Chapter Board, have been talking about for some time. We see this series as a forum to reach out to entry level drafters and designers in our industry and hopefully have them join ASPE. We have felt for some time that the emerging technology of Cadd and BIM and other IT systems is overwhelming the office to the point where there is just no time for teaching these youngsters basic Plumbing Engineering. The overriding purpose of ASPE, in our view, is to educate, so we are trying to fill this void and we are doing it for free. The youngsters can attend for no charge and they can stay for dinner to mingle with the regulars, most of whom are Past Presidents of the Chapter. We are having a second installment in October and if the response is there, we want very much to continue the series in January. We have the Product show in November and our joint meeting with ASHRAE in December and we will use this time to evaluate your response. I have a copy of the entire lecture series, graciously furnished to us from Chicago, and I assure you that it is excellent. It contains all the Math and Science behind the tables and graphs that have become second nature to the old guys. Many years ago my firm sent several of our youngsters to Franklin Tech at a substantial investment for the course that Joe Barbera taught. The course material offers the same training, but it is for free. If you are a Department Head or a Principal of a firm, please send your young people to this course. I assure you that they will learn some good stuff.

This past meeting Rick presented an introduction to the codes and my role was to highlight some points to the students. One point that I made and want to share with our Design Community is the interrelationship of the Codes. Do not fall into the trap of relying strictly on the Plumbing Code. As Mass has now moved to the ICC Code, ask yourself how many different books did you buy to keep up with the changes. How many of them do you read and cross reference to render an opinion now?

And that brings me to the point that I want to stress. I continue to get questions regarding my article on Secondary Roof Drains. I am still getting feedback that some Architects and other reviewers are saying that the Mass Plumbing Code requires secondary roof drainage. You gotta go to the Mass Building Code. The Mass Plumbing Board, no way, no how, requires secondary roof drains. Repeat; the Plumbing Code DOES NOT!!! Require Secondary Roof drains. If your Architect can not provide a secondary system by use of heavier steel, scuppers, or other means and if the Architect asks you, the Plumbing Designer, to provide a Secondary System, then you must design it per the Plumbing Board's policy.

By the way, the same is true for all jurisdictions using the ICC Codes. I promise that this will be the last rant about Secondary drainage.

By Manuel B. Garcia, PE, V.P. Legislative, Boston Chapter ASPE

 <p><b>J. H. Pokorny Associates LLC</b></p> <p>www.jhpokorny.net getinfo@jhpokorny.net</p> <p>1502 Providence Highway Norwood, MA 02062 Tel (781) 762 - 2661 Fax (781) 762 - 5949</p>	<p>Proud to Represent:</p> <ul style="list-style-type: none"> <li>Sloan Valve Co.</li> <li>Halsey Taylor Co.</li> <li>Leonard Valve Co.</li> <li>WaterSaver</li> <li>Guardian</li> <li>Georg Fischer</li> <li>Just</li> <li>Acorn</li> <li>Elmdor</li> <li>Chronomite</li> </ul>
--	--

**DiGiorgio Associates Inc. (DAI)** is a Boston based Architectural and Engineering firm with a branch office located in Farmingdale, ME. DAI was established in 1984. In 1988, DAI opened a construction subsidiary, Monitor Builders Inc. (MBI). In 2002, DAI added an engineering division to be able to offer clients a full range of quality design, engineering and construction services. At DAI, the primary focus is on providing quality services to our clients, while providing leadership and growth opportunities to our staff. Although DAI's client base is diverse, we specialize in the planning, architecture, engineering and construction of acute care hospital facilities as well as other medical project types.

We are currently accepting applications for the following position:

**Mechanical Engineer** – Position requires extensive experience in the design of mechanical systems for acute care hospitals, health care facilities and other related projects. The ideal candidate must have advanced experience in the design of HVAC, plumbing, medical gas and/or fire protection systems for healthcare facilities and the ability to manage all aspects of a project from preliminary design concepts through construction administration. In depth knowledge of FGI Guidelines is required. A working knowledge of Elite load estimating programs, Trane Trace 700 and MasterSpec is desirable. Ideal candidate must possess the ability to perform detailed field surveys of existing mechanical systems. Fifteen years plus experience and professional registration in the New England states is preferred. ASHRAE HFD certification is a plus. Ability to attain Professional registration in New York and Rhode Island as well as travel throughout New England will be required.

Competitive salary and excellent benefits package

Interested candidates should forward their qualifications to:

Human Resources  
DiGiorgio Associates Inc.  
225 Friend Street  
Boston, MA 02114

**Phone:** (207) 582-2400  
**Email:** [jobs@dai-boston.com](mailto:jobs@dai-boston.com)

[www.dai-boston.com](http://www.dai-boston.com)

The Maine office is located at 484 Maine Avenue in Farmingdale.

## pH Neutralization

### Greywater • Bio Decontamination

### Amalgam / Mercury Treatment



**www.paiH2O.com**  
**617-423-5639**



**ELKAY EZH<sub>2</sub>O**  
Quick, Clean & Green

For more than 90 years Elkay has been an innovator in manufacturing stainless steel sinks and coolers. Now we are excited to introduce the new EZH<sub>2</sub>O™ bottle filling station.

**Ideal for education, healthcare facilities, fitness clubs, and hospitality**

 **Emerson Swan**  
(800) 346-9215



Retro Fit To Any "EZ" Cooler

**KIRSCHNER ASSOCIATES, INC.**

8 Abbey Lane, PO Box 312  
Middleboro, MA 02346-0312  
Tel: 800-752-1588 Fax: 508-947-0850  
[www.kirschnerassociates.com](http://www.kirschnerassociates.com)

**PATTERSON-KELLEY  
AMERIDEX PHX • WENDLAND TANK  
RITE BOILERS • NATCO HEATERS  
SECURITY CHIMNEYS**

**SLOAN.**  
SLOAN VALVE COMPANY

Represented to ASPE by:

**J.H. Pokorny Associates**

phone: 781-762-2661

web: [www.jhpokorny.net](http://www.jhpokorny.net) • e-mail: [info@jhpokorny.net](mailto:info@jhpokorny.net)

The Walter F.



Company  
Serving you since '22"

77 Green St. Foxboro, Ma

Ph: 1-800-888-1922

Fax: 1-800-888-1942

[www.walterfmorris.com](http://www.walterfmorris.com)



Patrick J. Haney

Represented by:  
WP Haney Co.  
51 Norfolk Ave.  
South Easton, MA 02375  
Phone (508) 238-2030  
Fax (508) 238-8353  
Cell (508) 326-7056

In a few short days you can:

- Mingle with plumbing engineers from across the country
- Identify what design methods you need to increase your skill set
- Discover innovative ideas to take back to the office
- Find out what industry segments will be hot in the next year
- Pick the brains of experts working in the field
- Grow your knowledge...and your career

**NEW This Year! Networking Roundtable Discussions**

Partake in a lively conversation on the latest plumbing engineering issues with your peers from across the country.

2011 ASPE  
TECHNICAL  
SYMPOSIUM

OCT. 27-30, 2011  
ORLANDO, FLORIDA



Network to Succeed.



(Continued from "President's Report" page 3)

There was an email broadcast that had gone out previously. If you did not receive the email please go to the chapter's web site and register there ([www.aspebostonchapter.org](http://www.aspebostonchapter.org)). You should also understand that reception of the email does not automatically register you, it was only an invitation. You must register to be counted. For those of you that do not have internet access or an email account please contact Susan Killelea at 508-894-2000, and press 2 when prompted; we can sign you up over the phone.

### ASPE - Society Reports

(The following items are taken directly from ASPE President's Newsletter - authored by Bill Hughes, CPD, LEED AP, FASPE, President)

**2011 Technical Symposium - October 27-30, Orlando FL - Buena Vista Hotel** - This year's symposium once again is offering a wide variety of quality technical educational programs for all levels of designers. The presenters for the various topics have been instructed to include as part of their program practical examples. BIM sessions once again are being offered this year. This year ASPE is offering BIM sessions for two groups: beginners and advanced BIM users. Space is limited for these sessions so make sure that you fill out the section on the registration form to reserve your place for the BIM sessions. It is first come, first serve. This year's Symposium is offering something new and exciting: roundtable discussions, which offer the attendees, the opportunity for peer-to-peer discussions on a wide variety of subjects. Please go to [www.aspe.org](http://www.aspe.org) to register.

**Research Foundation** - The ASPE Research Foundation is currently looking for volunteers to serve on the foundation board. The foundation currently has several programs in various stages of development and wants to keep developing new projects to continue to grow the foundation to be a viable part of the Society.

Some of the projects the foundation is currently working on are: Storm Drain Testing, Sprinkler Study, John Hopkins Automatic Faucet and FOG/Additive Study.

### Conclusion

To close out this month's report I would like to reiterate a few things. First, the Product Show is crucial to our chapter and that attendance is the key to its success. The Product Show is a benefit to you as a member of this small community. So please take advantage of it and make a point to attend. This is your chapter - be an advocate and spread the word!

The second thing I would like to point out is that we as a chapter are a volunteer organization. The work we do is done by just a few people on a regular basis. None of us are paid to do what we do. Some of us, if not all, are driven because we want to make a difference. We do solicit volunteers to help us on the many events we plan. I cannot say thank you enough to those that do step up and give their time. We are always looking for others to help us out. I have found out that being active and involved has been extremely rewarding. If you want to give a little of your time, that would be great, we have many things that we can use the additional help on. Please feel free to talk to a chapter board member at anytime.

Sincerely, Rich Dean, CPD, President, Boston Chapter ASPE

**The Spencer Turbine Company**  
Manufacturer's of:

- UL-Listed Hermetic Natural Gas Boosters
- Central Vacuum Systems for Housekeeping
- Oral and Surgical Laser Smoke Evacuation

Represented By: **Environmental Air Specialties**  
P.O. Box 541, Grafton, MA 01519  
T: 508.839.6157 F: 508.839.4431  
W: [www.easne.com](http://www.easne.com)  
**Maurloe Brodeur - Sales/Engineering**  
C: 508.958.6346 E: [mbrodeur@easne.com](mailto:mbrodeur@easne.com)



**Standard UL-Listed & Custom Natural Gas Boosters & GasCube® Skid Packages Featuring:**

- Standard Boost Pressures to 83" WC/ Volumes to 240,000 CFH (Higher Available)
- Simplex & Duplex Designs
- Pre-Engineered, Pre-Piped, Factory Tested
- Smallest Footprint in the Industry
- Innovative Design Cools Motor & Extends its Life



**Spencer**  
[www.spencerturbine.com](http://www.spencerturbine.com)

<p><b>GOURLEYCO</b> HOT WATER BY DESIGN 80 FELTON STREET, WALTHAM, MA 02453 Phone: 781-894-9500 Fax: 781-894-2301 Website: <a href="http://www.gourleyco.com">www.gourleyco.com</a></p>	
<p><b>Raypak</b> Gas Water Heating Boilers Hydronic Heating Boilers Gas Fired Booster Heaters Commercial Pool and Spa Heaters</p>	<p><b>Rheem</b> Tank-type Water Heaters Gas and Electric Residential and Commercial</p> 
<p><b>RECO</b> Semi-Instantaneous &amp; Factory Packaged Water Heaters</p>	<p><b>EVO</b> Ultra High Efficiency Stainless Steel Boilers</p>

**The Fire Pump Testing Company**

Evaluation, Testing and Certification of Fire Suppression Systems  
Fire Pump Testing, Standpipe Testing and Building Commissioning  
Hydrant Flow Testing and Water Supply Analysis  
Residential and Commercial System Installation and Service  
Fire Protection Design and Engineering - System Hydraulic Analysis

Tel: (617) 971-0700  
Fax: (617) 524-7171  
Cell: (617) 592-4236

11 Varney Street  
Boston, MA 02130-4109  
Thomas Duross CPD

http: //www.thefirepumptestingcompany.com  
Email: [tom@thefirepumptestingcompany.com](mailto:tom@thefirepumptestingcompany.com)  
Member: ASPE, NFPA, AFSA, FCCCHR, BBB

# ASPE GOLF TOURNAMENT 2011

We got lucky! The 2011 21<sup>st</sup> annual ASPE golf tournament went off without a hitch! Even with the predictions of heavy rain, we were able to get the event in without a drop falling, although it rained buckets on the way home. First, we'd like to thank all the sponsors who continue to support the Boston ASPE Chapter. Secondly, to all the golfers who attended thank you for making the effort. We had overcast skies when the 80 golfers teed off at about 7:45. After the golf, we enjoyed steak tips and chicken. There were many winners in the raffle that followed with items like an iPod shuffle, bottles of wine, and golf clubs, with the grand prize of an iPad going to Rick Neth.

The Boston Chapter would like to thank all who participated.

## *The years golf winners were:*

### **Third Place:**

Chris Katralis  
Jim Grasseschi  
Greg Gilson  
Nick Giakoumidis

### **Second Place:**

John Carter  
John Thompson  
Derrek Shanahan  
Grant Anderson

### **First Place:**

Glenn DeNoble  
Brian Fugere  
Joe Collins  
Mark Armington

## Newsletter Advertising

We are accepting advertisements for the 2011-2012 advertising year.

### **WE OFFER BUSINESS CARD SIZE ADVERTISEMENT**

**The exact size is 3½" Wide X 2" High.  
The cost for the advertisement is \$650/yr.  
Ads will not be pro-rated.**

We only need new electronic files on new or changing ads. If this is an exact repeat of last years ad do not send a new file.

Acceptable file extensions formats are:  
"doc" or "pub" or "jpg".

Please do not have artwork scanned, as it compromises the quality of your ad. There will be an additional \$75.00 set up fee each time there is an ad change during the year.

ADS are to be the size of a business card – but do not need to be just a business card they may or may not include a persons name and can include line information, as long as the size and orientation is, as stated, 3 ½" wide X 2" high.

**For an Ad Request Form & Payment information contact Dawn Pokorny at 508-520-0133 or dawnp@jhpokorny.net**

*The High Efficiency Revolution is here  
in Domestic Hot Water Production  
from A. O. Smith*

**AO Smith**  
www.hotwater.com

**ES Emerson Swan**

800.346.9215



**Piping.  
Systems.  
Solutions.**

**Victaulic**  
Northeast Engineering Specialist  
David Dears • 617-824-0601

www.victaulic.com  
1-800-PICK-VIC

*(Continued from "Membership Report" on page 3)*

members that were purged from the mailing list. A few were probably from your office. If someone mentions to you that they didn't received a newsletter this past month you now know the reason.

I will be sending out a postcard this month to all the ex-members that were purged from the mailing list. The postcard will explain that they will no longer be receiving mailings from the chapter unless they renew their membership. I would like to ask a favor of anyone who is reading this. Please ask around to your co-workers and inquire if they received the last newsletter. If they didn't, please tell them why. We would like them to re-join and stay active and up to date with everything we have to offer. As you know, we have a Product Show coming up in November, and it would be a shame if they missed out on that, the seminars, or the monthly meetings.

### Chapter Update

The Boston Chapter currently has 300 members, and is the second largest chapter; just 17 members fewer than the Chicago chapter. We typically have roughly three dozen members whose membership is up for renewal each month. Although most of those members send in their renewal in a timely fashion, there are always a dozen or so that do not. Because renewals are slow in coming in, each month a half dozen or so are dropped from our chapter roster. Those that haven't returned their renewal paperwork at the end of the month are placed on a delinquent list. Joan Panora has volunteered to take that list every month and contact each member on it to verify if they will be renewing. It's a lot of work for Joan, much of which could be avoided if our members were to send in their renewals on time. I'm just asking each of you to please be more diligent in sending in your renewal paperwork in a more timely fashion. We would all appreciate it.

Even though we continue to recruit a handful of new members each month, our retention numbers are skewed against us because of the number of members not renewing on time. Again, a little more effort in getting the renewals sent in on time would help on that front as well. Thanks for being a member of ASPE's Boston Chapter.

**By John Callahan, CPD, V.P. Memb., Boston Chapter ASPE**

*(Continued from "Product Show" page 2)*



Rosemont Engineering, Inc. was founded in 1988 by Steve Rosa and Rick Dumont. The two originally joined forces to provide integrated mechanical and electrical control systems serving the chemical metering and extrusion industries.

Since then, the business has evolved into a manufacturer's rep firm primarily serving the fire protection industry. The largest principal

being ASCO-Firetrol; the leading manufacturer of fire pump controllers in the market.

Steve and Rick met while working together on projects for their respective companies; Steve at Zenith Pumps in Waltham, and Rick at R.T. Engineering in Mansfield. Steve was the manager for their pump systems integration group, and Rick was a Sales Engineer providing integrated controls for those systems. After working together for a few years, and realizing that both had always had the desire to be on their own, they made a decision to launch Rosemont Engineering, Inc.

They began modestly with not an order in house, and started knocking on doors. In those early days, Polaroid, Armstrong World Industries and Monsanto Chemical were still going strong requiring small project engineering assistance. Boston Scientific was blossoming putting in several extrusion lines for the manufacturing of non-invasive medical tubing. It was to customers such as these that Steve and Rick began providing their "problem solving" skills. They would review the requirements of a particular process need, and make recommendations for the various pieces of equipment needed to meet the objective. This would often consist of a combination of pumps, valves, motors, instrumentation, etc... and frequently include a control panel to tie everything together.

After a few years, they were approached by Kevin Shaw of Firetrol, Inc., from Cary, NC. They were interested in Rosemont Engineering, Inc. as their New England Representative. They were introduced to retiring rep, Dick Yurkanin, who in turn introduced them to the "Gurus" of the fire pump business. People like John Panora, Ken Kimball, George DiCenzo, Bill Converse, and Steve Baldwin, just to name a few. These individuals were key (and fortunately several still are) in teaching the fledgling entrepreneurs the day to day business of fire pump and control technology.

Over the years, Steve and Rick have continued to grow this segment of their business and have become a recognized leader in the service of fire pump controllers. Their Senior Service Engineer, Gerry Scampoli, has over 40 years of electrical experience- specializing in fire pump controllers. He is now passing the baton to Eric Silva, who recently joined Rosemont as a field service engineer. Gerry will continue to be Rosemont's in-house "Guru" and to be a warehouse of knowledge to the business.

Steve and Rick believe that the sales and service of fire pump controllers is not where it ends. It also involves education, awareness, prevention, and innovation. To that end, they offer educational seminars to engineering groups, as well as hands-on training to service groups like sprinkler contractors and testing companies.

To address the needs of the future, Rosemont Engineering, Inc. has developed a family of products that have the ability to monitor fire pump room equipment from the comfort of your office. The "Fire Pump Gateway" monitoring and testing equipment is a collaborative effort with IntegraSense of Nashua, NH. This product offering allows monitoring of critical pump room components and will afford clients the ability to document compliancy to satisfy overseeing authorities such as JCAHO and FM Global. Steve and Rick are excited about growing this segment of their business as there is currently nothing like this in the marketplace.

What began in 1988 as a start-up venture between two like-minded individuals, with nothing more than a desire to succeed, has culminated into a multi-segmented problem solving company specializing in customer service and satisfaction. They believe that help is only a phone call away.

Kevin Shaw of Firetrol told them back in the beginning that they needed three things to be successful: 1- Be the expert in your field, 2- Be a nice guy, and 3- Make the calls. After 23 years of successful business operation, and having met Steve and Rick, it would seem that advice was followed well.

All Product Show comments, suggestions and support are welcome at any time to:

**Paul Taylor** (ptaylor@ber-engineering.com)

**Nancy Bonnetti** (nbonnetti@quanteng.com)



## ETTER Engineering Company, Inc.

### SOLUTIONS . . .

To ALL Your Process Heating & Combustion Needs!

### Custom Manufacturing Solutions

- Complete regulator station design and build
- Custom process heating packages and applications
- Engineering specialty valve packages and valve trains
- Energy and metering services, including in-plant sub-metering, complete station design and build, and data acquisition
- UL-508A Certified Panel Shop specializing in combustion controls and flame safeguard systems.



[www.etterengineering.com](http://www.etterengineering.com)

## Robert Lyman - Sales Engineer

### Gas Booster Systems Include:

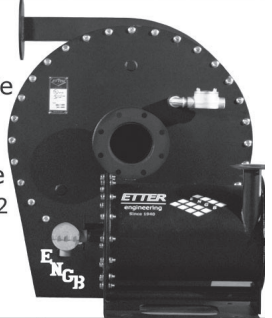
- Volumes in excess of 120,000 ICFH
- Static gains in excess of 41" WC
- Complete packaged systems available eliminating your TECHNICAL RISK!
- Simplex or duplex systems
- Indoor and outdoor installations
- Various control philosophies available



Toll Free: 800-444-1962  
Tel: 860-584-8842  
Cell: 203-980-1251

210 Century Drive  
Bristol, CT 06010

[rlyman@etterengineering.com](mailto:rlyman@etterengineering.com)



### Joe Myers

Regional Manager  
603-223-0107 – Direct  
603-223-0108 – Direct Fax  
603-496-9031 – Cell Phone  
[jmyers@milwaukeevalve.com](mailto:jmyers@milwaukeevalve.com)

Milwaukee Valve Company  
16550 West Stratton Drive  
New Berlin, WI 53151  
262-432-2800 – Phone  
262-432-2701 – Fax  
[www.milwaukeevalve.com](http://www.milwaukeevalve.com)



**TracPipe CounterStrike**  
The Gas Protection Revolution

**Contact:**  
Steve Hockenberry  
413-222-5866  
Vice President  
Business Development



- Water Purification
- pH Neutralization
- Engineering Services
- Full 24/7 Service



**Mar Cor Purification**  
160 Stedman St.  
Lowell, MA 01851  
978-453-9600  
[www.mcipur.com](http://www.mcipur.com)



Leonard Valve Company  
1360 Elmwood Avenue  
Cranston, RI 02910  
Ph (800) 222-1208  
Fax (401) 941-5310  
[www.leonardvalve.com](http://www.leonardvalve.com)



Leonard... "The Right Mix" for tempering your domestic hot water system.



J.H. Pokorny Associates

JH Pokorny Associates  
1502 Providence Hwy  
Norwood, MA 02062  
Ph (781) 762-2661  
Fax (781) 762-5949  
[www.jhpokorny.net](http://www.jhpokorny.net)

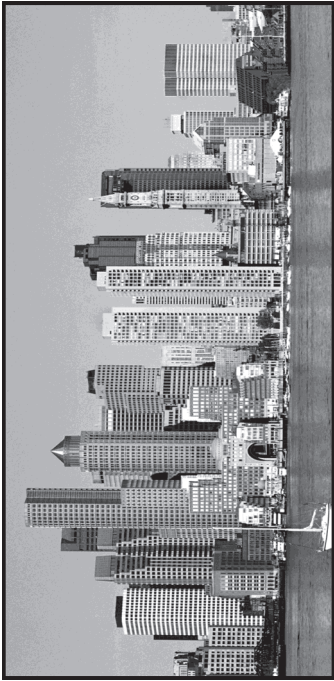
## Index of Paid Advertisers

AO Smith	7	Halsey Taylor	10	Quamum Engineering	10
Elkay	4	J. H. Pokorny Associates	74	Sloan Valve Company	5
Environmental Air Specialties	6	K Ross Co.	10	Victautic	7
Environmental Air Specialties	6	Kirschner Associates, Inc.	5	Walter F. Morris Company	5
ETTER Engineering	9	Leonard Valve	9	W.P. Haney / Watts	5
ETTER Engineering	9	Mar Cor	9		
Fire Pump Testing Company	6	Milwaukee Valve	9		
Gourley	6	OmegaFlex	9		
Guardian Equipment	10	Practical Applications	4		



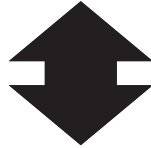
**From:**

**A.S.P.E.  
P.O. Box 111  
East Walpole, MA 02032**



**Boston Chapter - AMERICAN SOCIETY OF PLUMBING ENGINEERS**

**Next  
Event**



**Tuesday  
11th  
October**

**Send to:**



**FIRST CLASS MAIL**

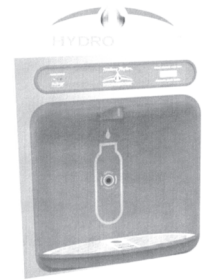
**K Ross Co.**  
Manufacturers Agent

WWW.KROSSCO.COM  
SALES@KROSSCO.COM  
(781) 422.2273



**Bottle Filling Station**

- **Visual Filter Monitor**  
Green, yellow, red LED lights indicate when filter needs maintenance
- **Water Dispenser**  
Quick fill rate - 1.1-1.5 gpm  
Laminar flow provides a clean fill with minimal splash
- **Green Counter™**  
Informs user of number of 16oz. bottles saved from landfills



halseytaylor.com

630.574.3500



**Guardian**

EMERGENCY EYEWASH & SHOWER TECHNOLOGY

**J.H. Pokorny Associates**  
1502 Providence Highway  
Norwood, MA 02062  
781 762 2661 TELEPHONE  
781 762 5949 FACSIMILE

**Guardian Equipment**  
1140 N North Branch St  
Chicago, IL 60642  
312 447 8100 TELEPHONE  
312 447 8101 FACSIMILE

**Quantum Engineering, Inc.**

121 Camelot Drive, Unit 4  
Plymouth, MA 02360  
Office: 508.747.6800  
Fax: 508.747.6803  
Cell: 781.389.2060  
nbonnetti@quanteng.com

**Nancy K. Bonnetti**  
*Medical Gas Specialist*

An authorized representative for:

